

Important ECG Traces

TACHYARRHYTHMIAS

Normal Rhythm (Dog)



Heart Rate: Dog 60-160 bpm; Cat 140-220 bpm
P-wave for every QRS, QRS for every P-wave
Regular Rhythm

Rule:
50 mm/sec: 10 big boxes = 1 sec
25 mm/sec: 5 big boxes = 1 sec

Sinus Tachycardia (Dog)



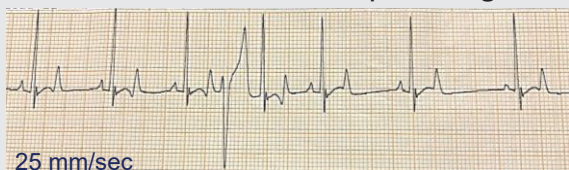
Heart Rate: Fast, ~180 bpm
P-wave for every QRS, QRS for every P-wave
QRS complexes are narrow with regular rhythm

Supraventricular Tachycardia (Dog)



Heart Rate: Fast
Indistinguishable P-waves, undulating baseline,
irregular RR interval, QRS complexes are narrow
Irregularly, irregular rhythm (Atrial fibrillation) or SVT
can be regular rhythm

Ventricular Premature Complex (Dog)



Heart Rate: Normal, Fast
Premature QRS complex without associated
P-wave; can see alone, in couplets, triplets or runs
Irregular rhythm

Multiform VPC (Dog)



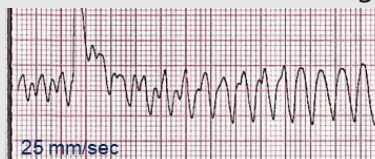
Heart Rate: Normal, Fast
Premature QRS complexes without associated P-waves
Irregular rhythm varying in appearance

Ventricular Tachycardia (Dog)



Heart Rate: Fast, with or without pulses, might be
state of cardiopulmonary arrest
Indistinguishable P- waves, generally regular RR
intervals, QRS complexes are wide
Usually regular rhythm, can be irregular

Ventricular Fibrillation (Dog)



Heart Rate: Indistinguishable, pulseless, cardiopulmonary
arrest
Complete electrical chaos, indistinguishable P, QRS or T
waves
Irregularly irregular rhythm