

Important ECG Traces

BRADYARRHYTHMIAS

Normal Rhythm (Dog)



Heart Rate: Dog 60-160 bpm; Cat 140-220 bpm
 P-wave for every QRS, QRS for every P-wave
 Regular Rhythm

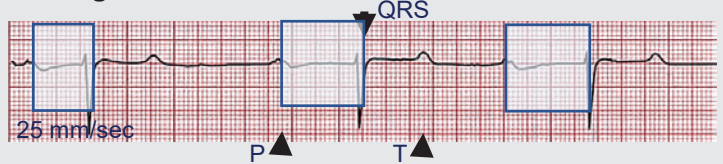
Rule:
 50 mm/sec: 10 big boxes = 1 sec
 25 mm/sec: 5 big boxes = 1 sec

Sinus Bradycardia (Dog)



Heart Rate: Slow, ~40 bpm in this example
 P-wave for every QRS, QRS for every P-wave
 Regular or regularly irregular rhythm

1st Degree AV Block (Horse)



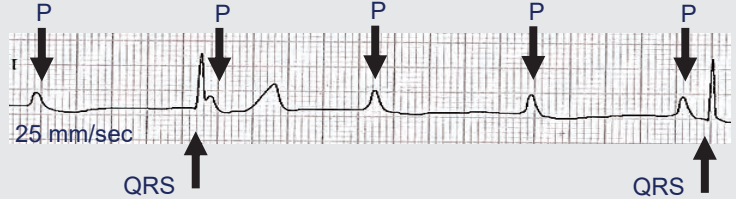
Heart Rate: Slow
 P-wave for every QRS, QRS for every P-wave
 Regular or regularly irregular rhythm
 Prolonged or increasingly prolonged PR interval

2nd Degree AV Block (Dog)



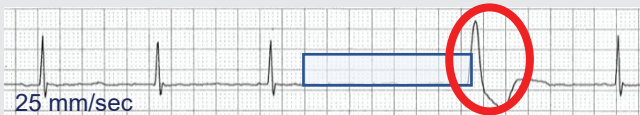
Heart Rate: Slow
 P-wave for every QRS, not a QRS for every P-wave
 Mobitz I: Progressive prolongation of PR interval
 Mobitz II: No prolongation of PR interval
 Irregular rhythm

3rd Degree AV Block (Dog)



Heart Rate: Slow
 Complete dissociation between P-waves and QRS complexes
 Irregular rhythm

Escape Beat (Dog)



Heart Rate: Slow
 Absent P-wave preceding wide bizarre QRS complex
 Irregular rhythm

Accelerated Idioventricular Rhythm (Cat)



Heart Rate: Slow, slow-normal, sinus rate is slower than ventricular depolarization
 P-wave appears to be "marching" through QRS complexes, some QRS complexes may appear wide or inverted
 Often intermittent, irregular rhythm